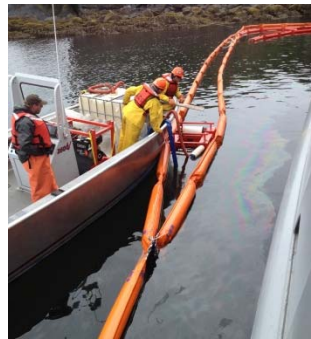


Harbor boom (18" to 26")



Application	Specifications						
<p>Used to contain, divert, or exclude oil from areas in calm water conditions. Chadux harbor boom comes in various sizes from 18" to 26". Most Chadux harbor boom is foam filled with a 12" to 14" skirt and a top-tension cable.</p>	<table border="1"> <tr> <td>Weight (lb/ ft)</td> <td>2 - 3</td> </tr> <tr> <td>Segment length (ft)</td> <td>100</td> </tr> <tr> <td>Connector</td> <td>ASTM standard</td> </tr> </table>	Weight (lb/ ft)	2 - 3	Segment length (ft)	100	Connector	ASTM standard
Weight (lb/ ft)	2 - 3						
Segment length (ft)	100						
Connector	ASTM standard						

Operational parameters	Support equipment	Additional information
<p>Appropriate for wave heights of less than 3 feet and moderate currents.</p>	<ul style="list-style-type: none"> • Tow bridles • Anchor packages 	<p>For containment booming of vessels, 3x the length of the vessel should be sufficient to encircle the ship.</p>